

# Catalogue

MACHINE VISION ILLUMINATION

 **SmartView**  
www.smartview.cz

**YOUR  
VISION  
PARTNER**

## ZOOM SPOT LIGHTS

SP - 25 | 50



## SPOT LIGHTS

SP3-26



## SHORT SPOT LIGHTS

SP-26S



## MINI SPOT LIGHTS

SP-12



## LED PATTERN PROJECTION LIGHTS

PT - 21 | 25



## RGB SPOT LIGHT

SP-35



## SPOT LIGHTS WITH INTERCHANGEABLE OPTICS

SP-27



## C-MOUNT LENS SPOT LIGHTS

SP-26S-CM  
SP-26-CM



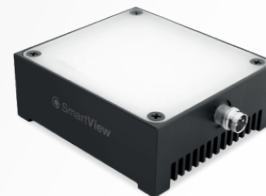
## DARK FIELD LIGHT

DF-70



## MATRIX LIGHTS

MX - 50 | 90



## LINE LIGHTS

LS - 60 | 200 | 400



## COAXIAL LIGHT

CL-50



# Catalogue

MACHINE VISION ILLUMINATION

Contact us

+420 770 157 036  
info@smartview.cz



smartview.cz

## RING LIGHTS

RL - 50 | 65 | 100 | 120 | 170



## SMART RING LIGHTS

SL - 30 | 70 | 120



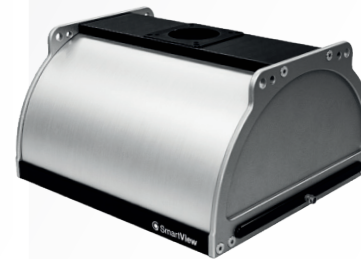
## LOW-ANGLE RING LIGHTS

LA - 30 | 70 | 120



## DOME LIGHTS

DL - 120 | 160 | 210  
DLU - 90 | 140 | 250  
DL-120W-AL



## HIGHPOWER FLAT LIGHTS

FL - 160 | 320 | 480  
FLNO - 160 | 320 | 480  
FLNO - 160 | 320 | 480



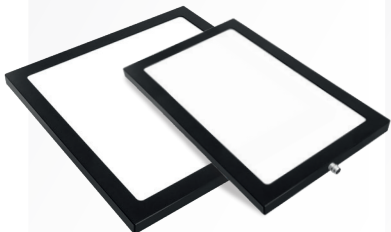
## DEFECTOSCOPY LIGHTS

FLDB - 160 | 320



## BACK LIGHTS

BL - 200 | 250 | 320x120  
BL - 50 | 85 | 130 | 180 |  
280 | 340



## BAR LIGHTS

LL - 30 | 120



## HIGHPOWER BAR LIGHTS

LL - 60 | 85 | 130



## HIGH-PERFORMANCE BAR LIGHTS

LL - 245 | 490 | 735 | 980



## LENS BAR LIGHTS

LL - 150 | 300 | 600



## SMARTVIEW DEMO SET

