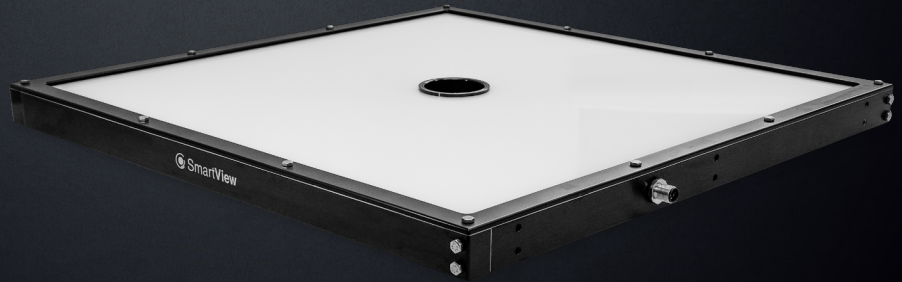


FLAT DOME LIGHT

FL-480-D50-F

Designed for incident, homogenous illumination including surface inspection, homogenous PCB boards, incident illumination of glossy objects & surfaces and large area lighting.



ROUGH, METAL HOUSING

ANALOG ILLUMINATION INTENSITY CONTROL

DIGITALLY CONTROLLED TIMING OF STROBE PULSES

LIGHT OPERATING MODES

PERMANENT ILLUMINATION MODE

This light is designed for both the permanent and light-triggering mode. For permanent illumination bring the voltage of 10-24 V to the pin number 4 (black wire). The light is ON during the time when the 24 V EN signal is activated. Use a PCL, camera or another binary signal source. For the light intensity control, please see the text below.

LIGHT TRIGGERING MODE

Light triggering mode saves energy and extends the lifetime of the light. Trigger operation mode is recommended when a parallel operation of 2 or more lights might affect the quality of the acquired image. To start using a triggering mode, bring the pin number 4 (black wire) to a 10-24 V signal. The light is ON when a voltage of 24 V is present at pin number 4 then. Use a PCL, camera, or another binary signal source for triggering. For the light intensity control, please see the text below.

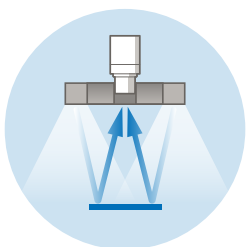
STROBE MODE

Strobe function significantly multiplies the maximum intensity of the light. The strobing function saves energy, extends the light lifetime and in many cases improves the stability of the entire inspections system. Pin number 2 (white wire) of the M8 connector is used to activate the strobe function. The maximum strobe pulse time is 10 ms, while the light idle time must be at least 10 times longer, which in this case makes 100 ms. Bringing a permanent logical 1 signal (10-24 V voltage) to a light strobe input, the light standardly operates in a 10 ms ON and 100 ms OFF cycle. The strobe operation pulse might be chosen in the time span of 1-10 ms. Please do not use a trigger mode during strobing function, do not bring a voltage to the pin number 3.

LIGHT SOURCE INTENZITY REGULATION

The light intensity might be regulated by an analogue voltage, PWM signal or an external controller. In case of using an analogue signal, the light intensity might be regulated in a linear way at a pin number 4 by the voltage span of 2.7 -10 V. Bringing a voltage of 10-24 V to the pin number 4, the light works at its maximum intensity. The maximum PWM frequency is ≤ 40 kHz.

WAYS OF USE



ORDERING CODE

example of the ordering code

FL	-	480	B	-	D50	-	F
Flat Light		Active Area	Wavelength		Ø of Hole for Camera		Food version

CONFIGURATION

Model	Wavelength [nm]	Active Area [mm]	Ø of Hole for Camera [mm]
FL-480W	CTR 5000 k	480 x 480	50
FL-480IR	850	480 x 480	50
FL-480R	625	480 x 480	50
FL-480G	528	480 x 480	50
FL-480B	470	480 x 480	50

ELECTRIC PARAMETERS

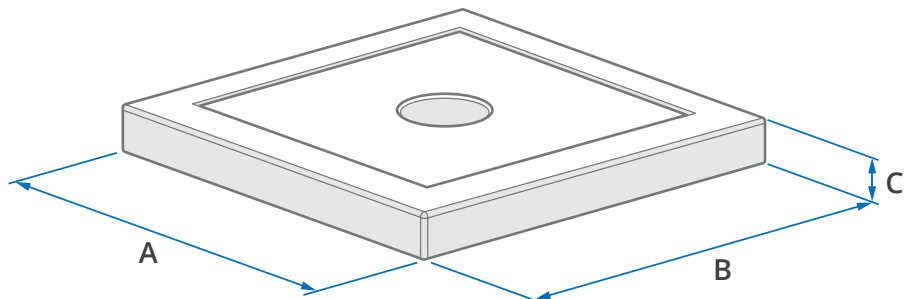
Model	FL-480W	FL-480IR	FL-480R	FL-480G	FL-480B
U_n Voltage Span	12-28 V	12-28 V	12-28 V	12-28 V	12-28 V
U_{jm} Nominal Voltage	24 V DC	24 V DC	24 V DC	24 V DC	24 V DC
I_{jm} Nominal Current	5.2 A	5.2 A	5.2 A	5.2 A	5.2 A
P Input	125 W	125 W	125 W	125 W	125 W
U_{trig} Trigger Voltage	≥ 10 - 24 V ²	I_{trig} Trigger Current	2.3 mA ²	U_{EN} Analogue Dimming	≥ 2.7 .. ≤ 10 V ²
U_{str} Strobe Voltage	3 - 24 V ³	I_{str} Strobe Current	1.9 mA ³	I_{EN} PWM Dimming	> 10 .. ≤ 24 V ¹

¹ PWM maximal rate is ≤ 40 kHz ² EN (Enable) trigger signal values, M8 connector – pin number 4 ³ Driving voltage and current M8 connector - pin number 2

DIMENSIONS & WEIGHT

A	Length [mm]	524
B	Width [mm]	524
C	Height [mm]	42
🛒	Weight [g]	9 991

i For more details please see our 2D drawings.

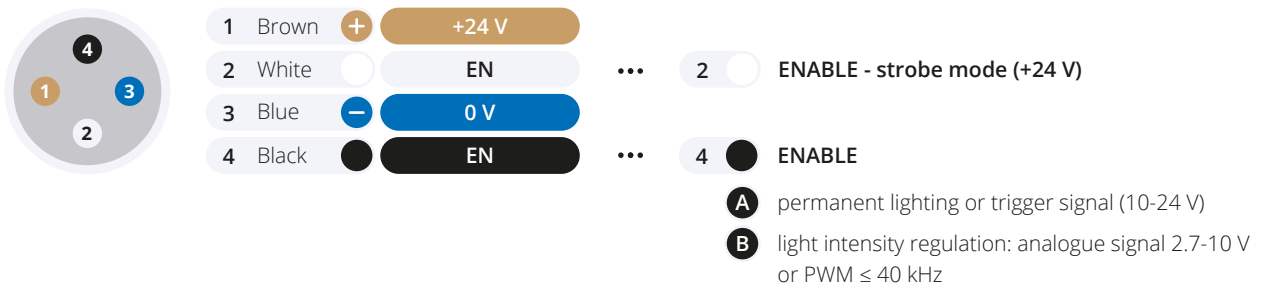


TECHNICAL DATA

IP Category: IP67	Protection Category: III	Ambient Temperature: -20 - +40 °C	Isolation Resistance: 500 V	Housing Material: Aluminium alloy
--------------------------	---------------------------------	--	------------------------------------	--

CONNECTOR M12-4PIN ASSIGNMENT

light connector front view



ACCESSORIES

✓ Angular Cable M12-4PIN (5 m)

OPTIONAL ACCESSORIES

- + Straight Cable M12-4PIN (5 m)
- + Light Polarization
- + Controller **Smart Light CT-SL4D**
- + Controller **CM-01**

 SmartView

**YOUR
VISION
PARTNER**



COMPANY OFFICE

Smart View s.r.o.
Nivy 313
765 02 Otrokovice
Česká republika

+420 601 575 797
+420 602 457 497

info@smartview.cz
www.smartview.cz

OUR SALES PARTNERS SLOVAKIA

MTS, spol. s r.o.
Krivá 53
027 55 Krivá
Slovensko

+421 43 5819 111

mts@mts.sk
www.mts.sk