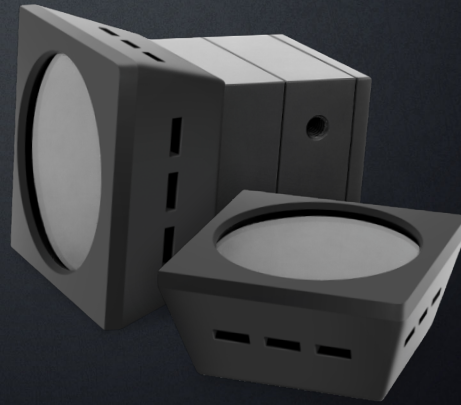


# LIGHT POLARIZING COVER PF-26

## SUITABLE FOR

SP-26 | SP-26S HR | R | G | B | W

Pre-made light polarizing cover.  
Tested in high temperature applications.



GLASS COVER

PASSIVE COOLING DESIGN

EASY FIT & COMPACT SIZE

## TECHNICAL SPECIFICATION

Wavelength Range $\lambda$	450 - 660 nm
Polarization Efficiency	> 99.5
Light Transmittance	40 % (+/- 2 %)
Guaranteed Lifetime	1000 h at 100°C
Operating Ambient Temperature	100 °C

## DIMENSIONS & WEIGHT

<b>A</b> Length [mm]	41
<b>B</b> Width [mm]	41
<b>C</b> Height [mm]	21
 Weight [g]	16

## INSTALLATION & MAINTENANCE

- 1 Install the light polarizing cover by applying gentle pressure until the locking teeth fit into the grooves on the light body. The groove on the front side of the light polarization cover indicates the orientation of polarization plane.
  - 2 The filter naturally heats up during light operation. Consider directing airflow to the light and filter to allow natural air circulation. Optimal cooling is achieved when the airflow is perpendicular to the light axis. Avoid obstructing ventilation channels.
  - 3 Avoid collisions with other machine parts during installation. Prevent contact or contamination of the filter's inner surface side.
  - 4 For operational cleaning of the polarization cover outer surface, use a cloth and isopropyl alcohol. Avoid using abrasive materials, corrosives, or water.
  - 5 The inner side of the light polarization cover can only be cleaned by blowing it with dry air.
  - 6 If the glass layer is broken, replace the filter immediately.
- !** Avoid impact and pressure on the polarizing cover, the filter may break and **cause an injury from glass fragments.**

## RECOMMENDATION

The PF-26 filter can be used in both continuous and trigger lighting operation modes. However, if the temperature on the filter itself reaches 95°C during continuous illumination operation mode, we strongly recommend using the light in a trigger operation mode or ensuring adequate light polarizing cover cooling with airflow.